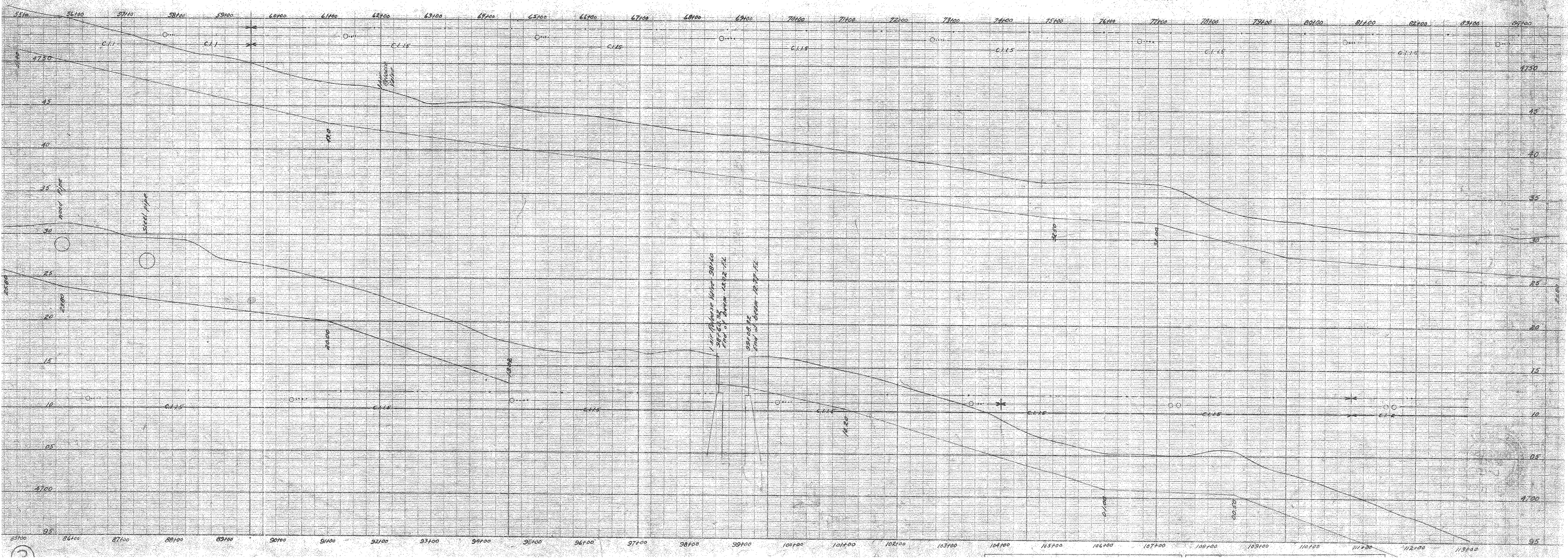
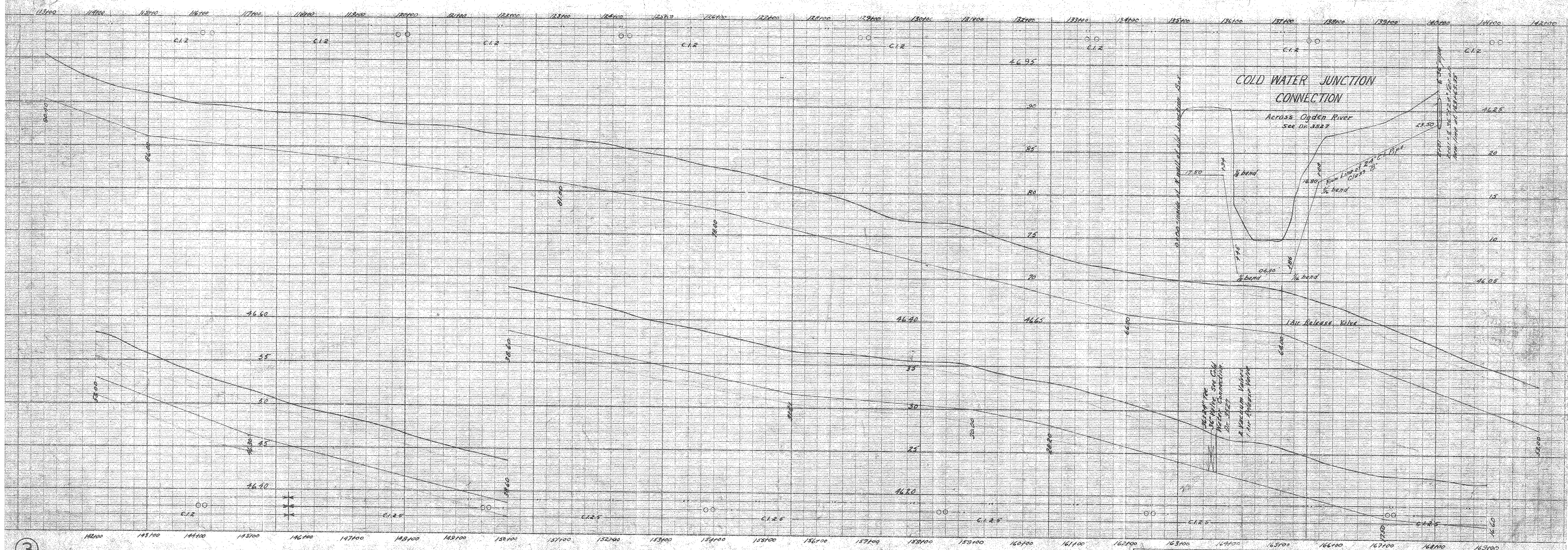
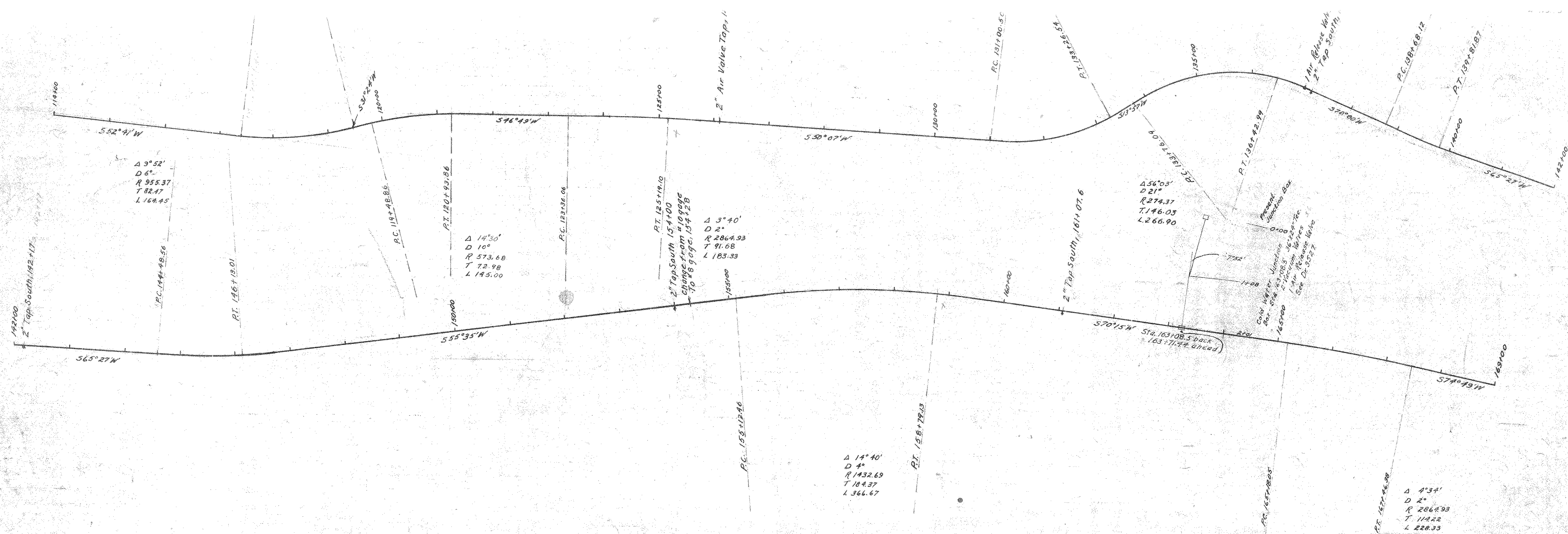
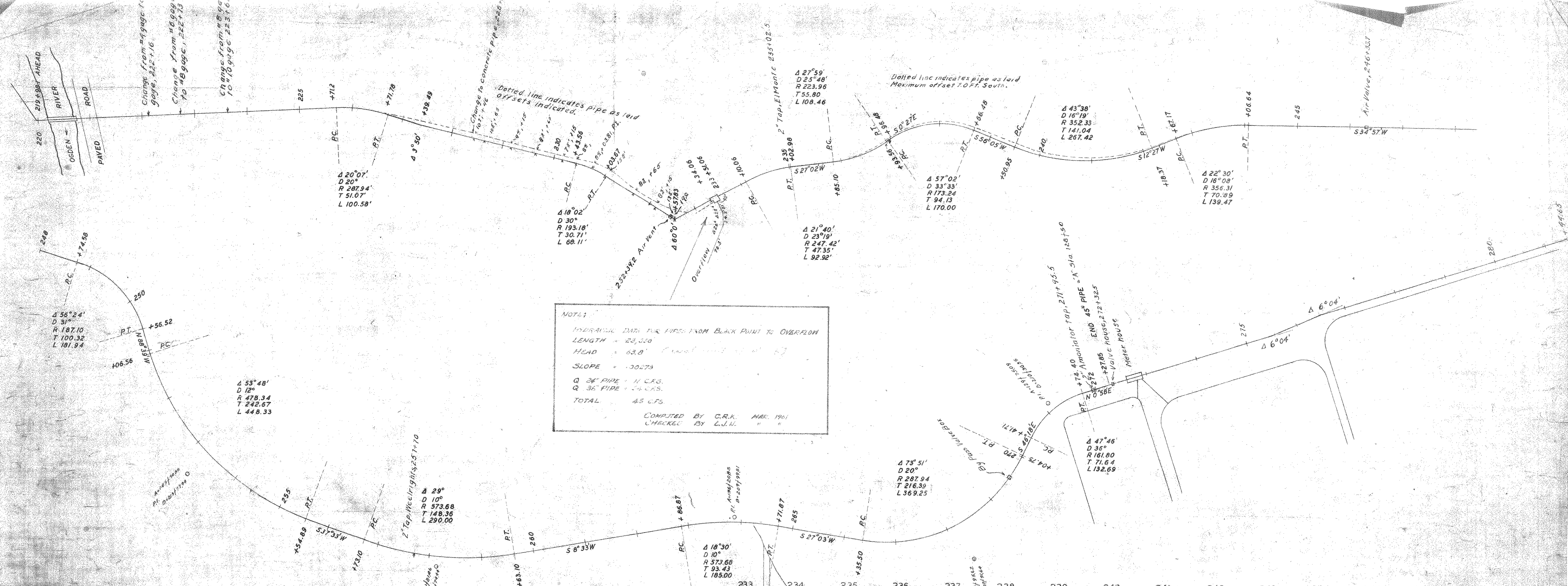


2+15

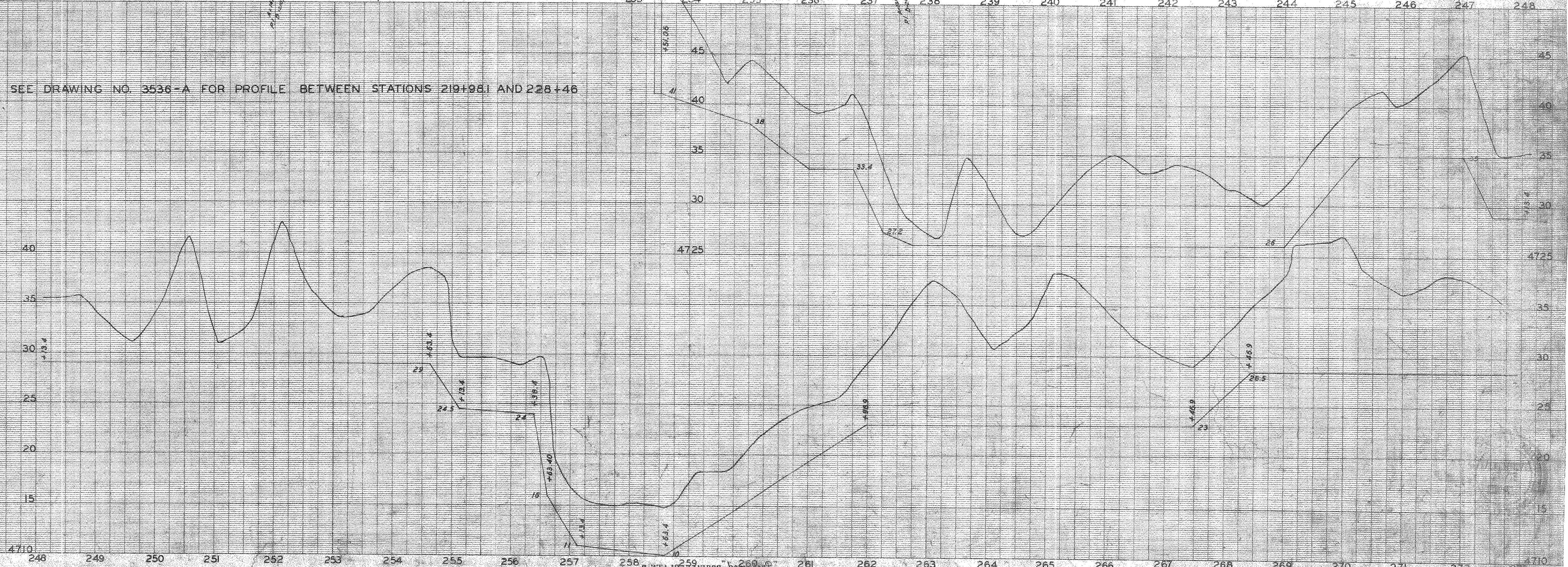






NOTE:
HYDRAULIC DATA FOR PIPE FROM BLACK POINT TO OVERFLOW
LENGTH = 23,500
HEAD = 63.8'
SLOPE = .00273
Q 24" PIPE = 11 CFS.
Q 36" PIPE = 24 CFS.
TOTAL = 35 CFS.
COMPUTED BY C.R.K. MAR. 1961
CHECKED BY L.J.W. "

SEE DRAWING NO. 3536-A FOR PROFILE BETWEEN STATIONS 219+98.1 AND 228+46



M-39-A
H-149